

# Bachelor of Science in Technical Management

## Student Achievement Data

### Table of Contents

Metric 1 – Peregrine External Exam Results

Stakeholders: Current Students, Future Students, and Faculty

Metric 2 – Alumni Placement

Stakeholders: Alumni, Current Students, Future Students, Industry

Metric 3 – Program Outcome Skills Preparedness

Stakeholders: Alumni, Current Students, Future Students, Industry

## Metric 1 – Peregrine External Exam Results

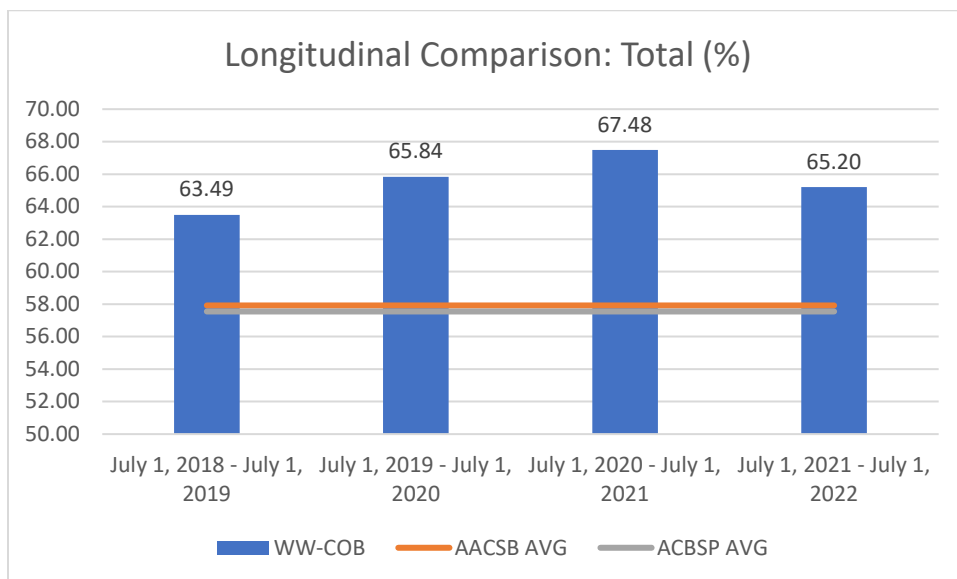
Stakeholders: Current Students, Future Students, and Faculty

Longitudinal Comparison: Total

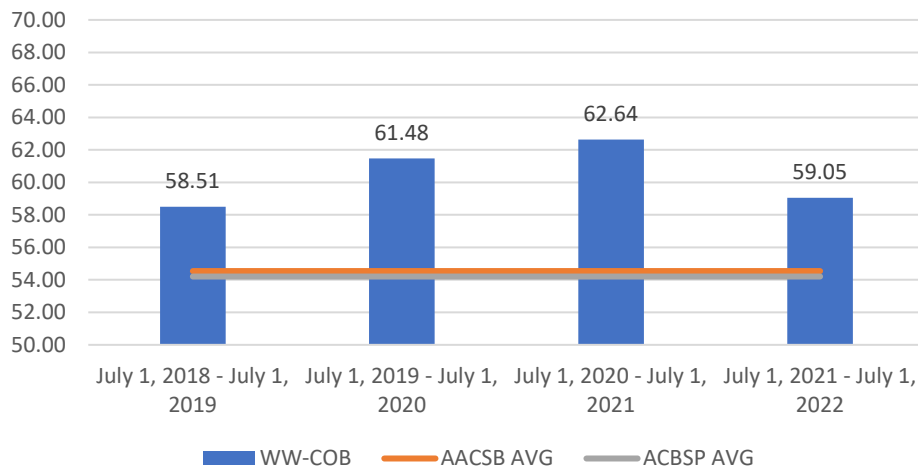


### Embry-Riddle Aeronautical University - Worldwide Campus

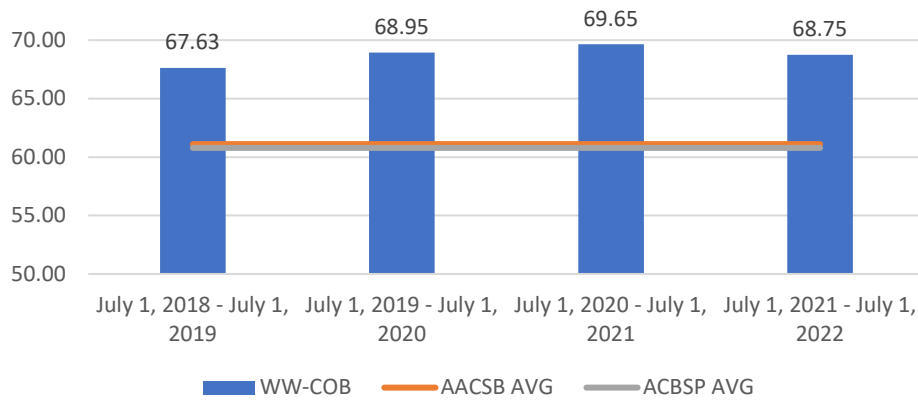
<b>Assessment Period:</b>	July 1, 2018 - June 30, 2019
Number of Exams (Outbound):	375
<b>Assessment Period:</b>	July 1, 2019 - June 30, 2020
Number of Exams (Outbound):	400
<b>Assessment Period:</b>	July 1, 2020 - June 30, 2021
Number of Exams (Outbound):	541
<b>Assessment Period:</b>	July 1, 2021 - June 30, 2022
Number of Exams (Outbound):	518
<b>Assessment:</b>	Strategic Management - 436



### Longitudinal Comparison: Accounting (%)



### Longitudinal Comparison: Business Integration and Strategic Management (%)



## Metric 2 – Alumni Placement

Stakeholders: Alumni, Current Students, Future Students, Industry

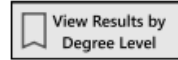
Embry-Riddle Aeronautical University Alumni Placement Rates

One Year After Graduation Worldwide Campus - Graduate Degrees

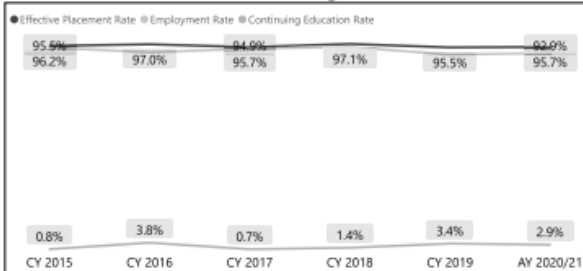
### Alumni Outcomes One Year After Graduation

Campus: Daytona Beach Prescott Worldwide

Program: BS Technical Management

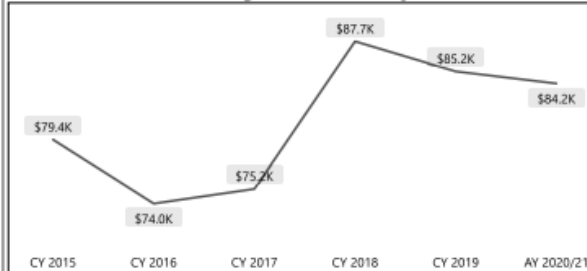


#### Placement & Continuing Education Rates



Cohort	Respondent Count	Effective Placement Rate	Employment Rate	Continuing Education Rate
CY 2015	137	96.2%	95.5%	0.8%
CY 2016	136	97.0%	93.2%	3.8%
CY 2017	142	95.7%	94.9%	0.7%
CY 2018	79	97.1%	95.7%	1.4%
CY 2019	94	95.5%	92.1%	3.4%
AY 2020/21	70	95.7%	92.9%	2.9%

#### Average Annual Salary\*



Cohort	Respondent Count	Average Salary
CY 2015	105	\$79,413
CY 2016	106	\$73,998
CY 2017	122	\$75,238
CY 2018	63	\$87,726
CY 2019	77	\$85,183
AY 2020/21	58	\$84,162

NOTES:  
Academic Year (AY) cohorts include degrees July through June each year. Calendar Year (CY) cohorts include degrees January through December each year. Worldwide was transitioned from a Calendar Year to an Academic Year effective AY 2020/21.

\* Includes only full-time US salaries and excludes certificates.

Placement Rate calculation:  
- (# Employed + # Continuing Education) / (# Employed + # Continuing Education + # Seeking Employment)  
- Graduates seeking employment (out of the workforce) are excluded from the placement rate calculation.  
- Certificates are excluded.

SOURCE: Residential & Worldwide Alumni Surveys: One Year After Graduation. Institutional Research.

SOURCE: Worldwide Alumni Survey: One Year After Graduation. Institutional Research.

### Metric 3 – Program Outcome Skills Preparedness

Stakeholders: Alumni, Current Students, Future Students, Industry

Program-specific Skills: ERAU's preparation

Bachelor of Science in Technical Management – Worldwide

Outcome Text	Count	Mean	Percent	Count	Mean	Percent
☐ <b>Ability to analyze and evaluate business functions and processes, identify needs, and structure business approaches using problem-solving, critical thinking, and established methodologies and standards</b>	<b>56</b>	<b>3.5</b>	<b>100.0%</b>	<b>38</b>	<b>3.3</b>	<b>100.0%</b>
Very Useful/Very High Preparation	33	4.0	58.9%	17	4.0	44.7%
Useful/High Preparation	19	3.0	33.9%	16	3.0	42.1%
Not Very Useful/Little Preparation	4	2.0	7.1%	5	2.0	13.2%
☐ <b>Ability to apply research to solve business problems and communicate the results effectively</b>	<b>56</b>	<b>3.6</b>	<b>100.0%</b>	<b>38</b>	<b>3.3</b>	<b>100.0%</b>
Very Useful/Very High Preparation	36	4.0	64.3%	18	4.0	47.4%
Useful/High Preparation	16	3.0	28.6%	15	3.0	39.5%
Not Very Useful/Little Preparation	4	2.0	7.1%	5	2.0	13.2%
☐ <b>Ability to apply strategic and project planning principles and techniques in a technical operation</b>	<b>56</b>	<b>3.5</b>	<b>100.0%</b>	<b>39</b>	<b>3.5</b>	<b>100.0%</b>
Very Useful/Very High Preparation	33	4.0	58.9%	22	4.0	56.4%
Useful/High Preparation	20	3.0	35.7%	13	3.0	33.3%
Not Very Useful/Little Preparation	3	2.0	5.4%	4	2.0	10.3%
☐ <b>Ability to demonstrate a proficiency in identifying and solving problems related to the specialty areas of Information Systems, Information Security, Project Management, Logistics and Supply Chain Management, Engineering Science, or Occupational Safety and Health</b>	<b>56</b>	<b>3.6</b>	<b>100.0%</b>	<b>38</b>	<b>3.4</b>	<b>100.0%</b>
Very Useful/Very High Preparation	36	4.0	64.3%	19	4.0	50.0%
Useful/High Preparation	16	3.0	28.6%	16	3.0	42.1%
Not Very Useful/Little Preparation	4	2.0	7.1%	3	2.0	7.9%
☐ <b>Ability to employ supervisory and management skills needed to effectively lead and support others within a team environment across business functions</b>	<b>56</b>	<b>3.7</b>	<b>100.0%</b>	<b>38</b>	<b>3.3</b>	<b>100.0%</b>
Very Useful/Very High Preparation	39	4.0	69.6%	17	4.0	44.7%
Useful/High Preparation	15	3.0	26.8%	16	3.0	42.1%
Not Very Useful/Little Preparation	2	2.0	3.6%	5	2.0	13.2%
☐ <b>Ability to use general managerial skills (leadership, problem solving, and decision-making)</b>	<b>56</b>	<b>3.6</b>	<b>100.0%</b>	<b>39</b>	<b>3.4</b>	<b>100.0%</b>
Very Useful/Very High Preparation	36	4.0	64.3%	19	4.0	48.7%
Useful/High Preparation	18	3.0	32.1%	16	3.0	41.0%
Not Very Useful/Little Preparation	2	2.0	3.6%	4	2.0	10.3%
☐ <b>Ability to use managerial skills in computers</b>	<b>56</b>	<b>3.6</b>	<b>100.0%</b>	<b>39</b>	<b>3.3</b>	<b>100.0%</b>
Very Useful/Very High Preparation	35	4.0	62.5%	19	4.0	48.7%
Useful/High Preparation	19	3.0	33.9%	14	3.0	35.9%
Not Very Useful/Little Preparation	1	2.0	1.8%	6	2.0	15.4%
Not at all Useful/Little Preparation	1	1.0	1.8%			
☐ <b>Ability to use managerial skills in computers</b>	<b>56</b>	<b>3.6</b>	<b>100.0%</b>	<b>39</b>	<b>3.3</b>	<b>100.0%</b>
Very Useful/Very High Preparation	35	4.0	62.5%	19	4.0	48.7%
Useful/High Preparation	19	3.0	33.9%	14	3.0	35.9%
Not Very Useful/Little Preparation	1	2.0	1.8%	6	2.0	15.4%
Not at all Useful/Little Preparation	1	1.0	1.8%			
☐ <b>Ability to use managerial skills in quantitative/mathematics</b>	<b>56</b>	<b>3.3</b>	<b>100.0%</b>	<b>39</b>	<b>3.2</b>	<b>100.0%</b>
Very Useful/Very High Preparation	31	4.0	55.4%	17	4.0	43.6%
Useful/High Preparation	15	3.0	26.8%	14	3.0	35.9%
Not Very Useful/Little Preparation	7	2.0	12.5%	8	2.0	20.5%
Not at all Useful/Little Preparation	3	1.0	5.4%			
☐ <b>Ability to use managerial skills in technical writing</b>	<b>56</b>	<b>3.6</b>	<b>100.0%</b>	<b>39</b>	<b>3.3</b>	<b>100.0%</b>
Very Useful/Very High Preparation	38	4.0	67.9%	18	4.0	46.2%
Useful/High Preparation	16	3.0	28.6%	16	3.0	41.0%
Not Very Useful/Little Preparation	2	2.0	3.6%	5	2.0	12.8%
☐ <b>Knowledge of key principles of business and management disciplines and their business applications; and the possible interrelationships to technical management practices especially in the field of aviation and aerospace</b>	<b>56</b>	<b>3.4</b>	<b>100.0%</b>	<b>38</b>	<b>3.4</b>	<b>100.0%</b>
Very Useful/Very High Preparation	27	4.0	48.2%	19	4.0	50.0%
Useful/High Preparation	26	3.0	46.4%	16	3.0	42.1%
Not Very Useful/Little Preparation	3	2.0	5.4%	3	2.0	7.9%
<b>Total</b>	<b>560</b>	<b>3.5</b>	<b>100.0%</b>	<b>385</b>	<b>3.4</b>	<b>100.0%</b>

SOURCE: Worldwide Alumni Survey: One Year After Graduation. Institutional Research.

<https://app.powerbi.com/view?r=eyJrIjoizGI4YjlkMjQtMzIxZi00ZDRkLThlZjYtZWZjYTQ1MWMxNWU2IiwidCI6IjY5MzFjOTYzLTA3YjctNDE1Ni1hYjBILTM1ZDFmNzkwMzViOCIsImMiOiJF9&pageName=ReportSection>