

Master of Science in Management

Student Achievement Data

Table of Contents

Metric 1 – Peregrine External Exam Results

Stakeholders: Current Students, Future Students, and Faculty

Metric 2 – Alumni Placement

Stakeholders: Alumni, Current Students, Future Students, Industry

Metric 3 – Program Outcome Skills Preparedness

Stakeholders: Alumni, Current Students, Future Students, Industry

Metric 1 – Peregrine External Exam Results

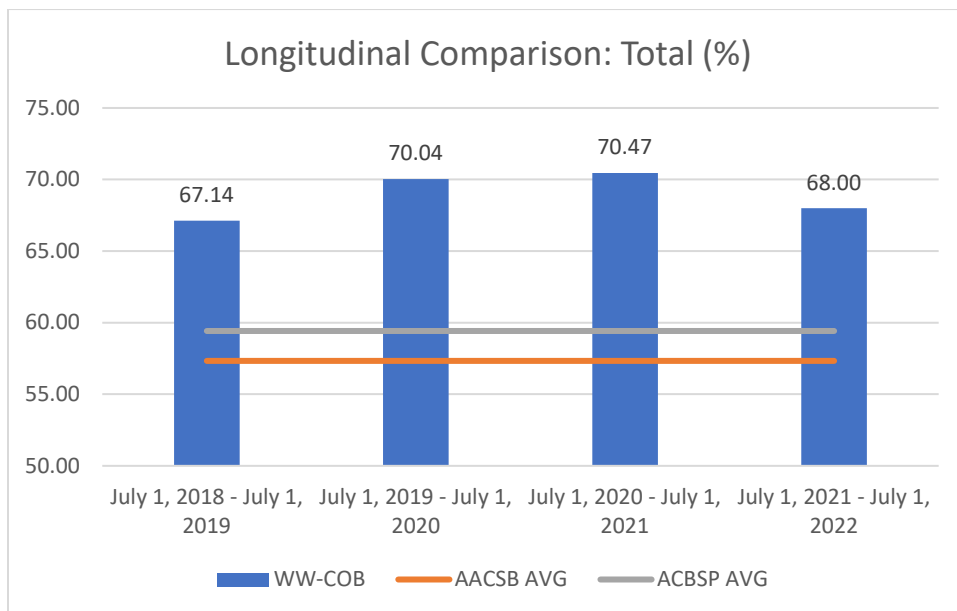
Stakeholders: Current Students, Future Students, and Faculty

Longitudinal Comparison: Total

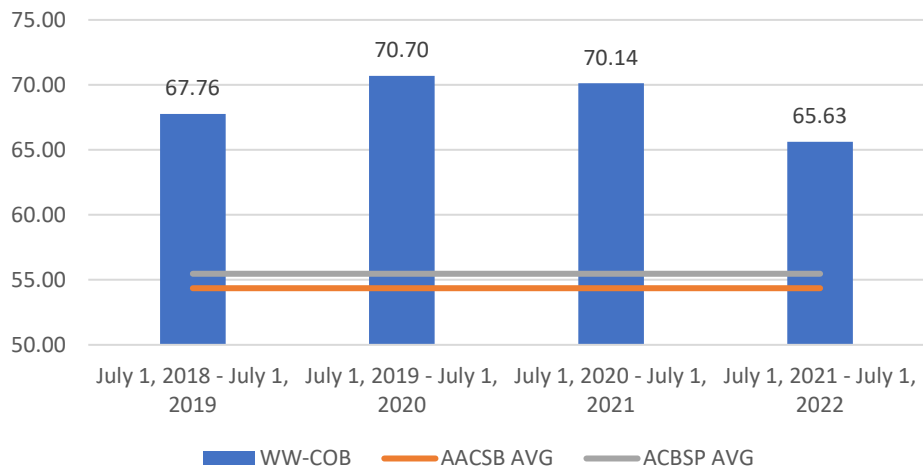


Embry-Riddle Aeronautical University - Worldwide Campus

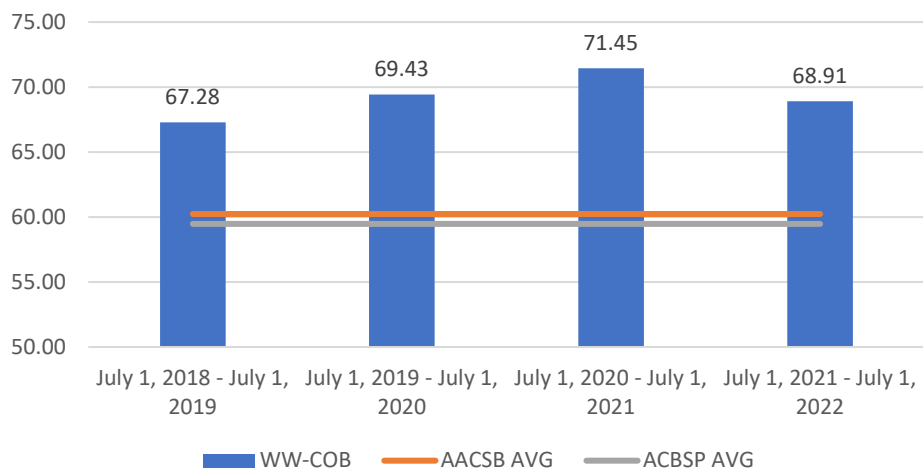
Assessment Period:	July 1, 2018 - June 30, 2019
Number of Exams (Outbound):	232
Assessment Period:	July 1, 2019 - June 30, 2020
Number of Exams (Outbound):	229
Assessment Period:	July 1, 2020 - June 30, 2021
Number of Exams (Outbound):	220
Assessment Period:	July 1, 2021 - June 30, 2022
Number of Exams (Outbound):	174
Assessment:	BUSW 635 Business Strategy for Managers



Longitudinal Comparison: Business Finance (%)



Longitudinal Comparison: Management (%)

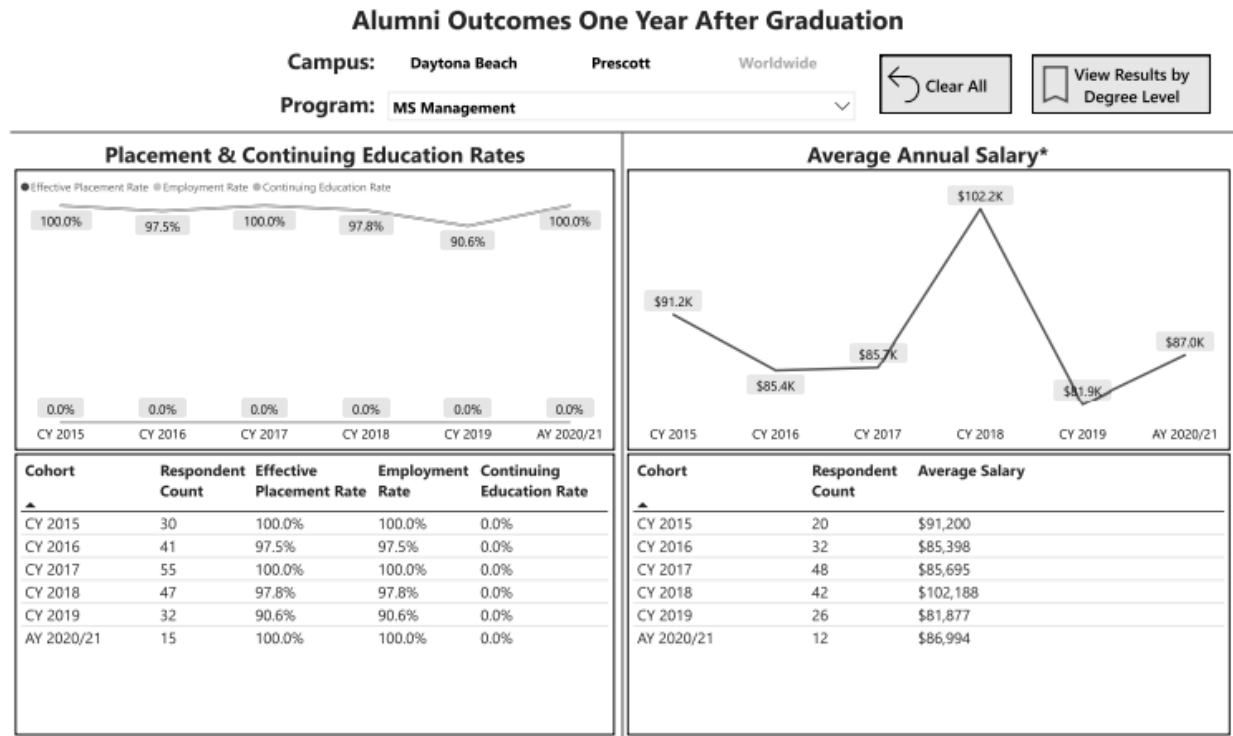


Metric 2 – Alumni Placement

Stakeholders: Alumni, Current Students, Future Students, Industry

Embry-Riddle Aeronautical University Alumni Placement Rates

One Year After Graduation Worldwide Campus - Graduate Degrees



NOTES:
Academic Year (AY) cohorts include degrees July through June each year. Calendar Year (CY) cohorts include degrees January through December each year. Worldwide was transitioned from a Calendar Year to an Academic Year effective AY 2020/21.

* Includes only full-time US salaries and excludes certificates.

Placement Rate calculation:
- $(\# \text{ Employed} + \# \text{ Continuing Education}) / (\# \text{ Employed} + \# \text{ Continuing Education} + \# \text{ Seeking Employment})$
- Graduates seeking employment (out of the workforce) are excluded from the placement rate calculation.
- Certificates are excluded.

SOURCE: Residential & Worldwide Alumni Surveys: One Year After Graduation. Institutional Research.

SOURCE: Worldwide Alumni Survey: One Year After Graduation. Institutional Research.

Metric 3 – Program Outcome Skills Preparedness

Stakeholders: Alumni, Current Students, Future Students, Industry

Program-specific Skills: ERAU's preparation

Master of Science in Management – Worldwide

Outcome Text	Usefulness			ERAU Preparation		
	Count	Mean	Percent	Count	Mean	Percent
<input type="checkbox"/> Ability to adapt to the vast array of global differences including corporate and international cultures and geopolitical differences from which to manage within multinational enterprises and virtual teams	16	3.5	100.0%	10	3.1	100.0%
Very Useful/Very High Preparation	10	4.0	62.5%	3	4.0	30.0%
Useful/High Preparation	4	3.0	25.0%	5	3.0	50.0%
Not Very Useful/Little Preparation	2	2.0	12.5%	2	2.0	20.0%
<input type="checkbox"/> Ability to apply quantitative thinking and analysis to demonstrate data-driven managerial decision making using different types of organizational data	16	3.7	100.0%	10	3.1	100.0%
Very Useful/Very High Preparation	11	4.0	68.8%	3	4.0	30.0%
Useful/High Preparation	5	3.0	31.3%	5	3.0	50.0%
Not Very Useful/Little Preparation				2	2.0	20.0%
<input type="checkbox"/> Ability to define and solve complex organizational problems by manage projects and human resources using both critical thinking and managerial best practices	16	3.5	100.0%	10	3.0	100.0%
Very Useful/Very High Preparation	8	4.0	50.0%	1	4.0	10.0%
Useful/High Preparation	8	3.0	50.0%	8	3.0	80.0%
Not Very Useful/Little Preparation				1	2.0	10.0%
<input type="checkbox"/> Ability to demonstrate advanced management concepts and skills in organizational behavior, decision making and action strategy, and organizational process including managerial excellence	16	3.8	100.0%	9	2.9	100.0%
Very Useful/Very High Preparation	12	4.0	75.0%	1	4.0	11.1%
Useful/High Preparation	4	3.0	25.0%	6	3.0	66.7%
Not Very Useful/Little Preparation				2	2.0	22.2%
<input type="checkbox"/> Ability to present skills to develop executive quality reports that are both informative and persuasive using the best available data from which decisions can be made including visualizations	15	3.8	100.0%	10	3.2	100.0%
Very Useful/Very High Preparation	12	4.0	80.0%	3	4.0	30.0%
Useful/High Preparation	3	3.0	20.0%	6	3.0	60.0%
-						
Not Very Useful/Little Preparation				1	2.0	10.0%
Total	79	3.6	100.0%	49	3.1	100.0%

SOURCE: Worldwide Alumni Survey: One Year After Graduation. Institutional Research.

<https://app.powerbi.com/view?r=eyJrIjoiazGI4YjlkMjQzMzlxZi00ZDRkLTlhZjYtZWZjYTQ1MWMxNWU2IiwidCI6IjY5MzFjOTYzLTA3YjctNDE1Ni1hYjBILTM1ZDFmNzkwMzViOCIsImMiOiJF9&pageName=ReportSection>